

Notes for Figure 6P-51—Typical Application 51
Paved Shoulder Closure with a Bicycle Diversion onto a Temporary Path

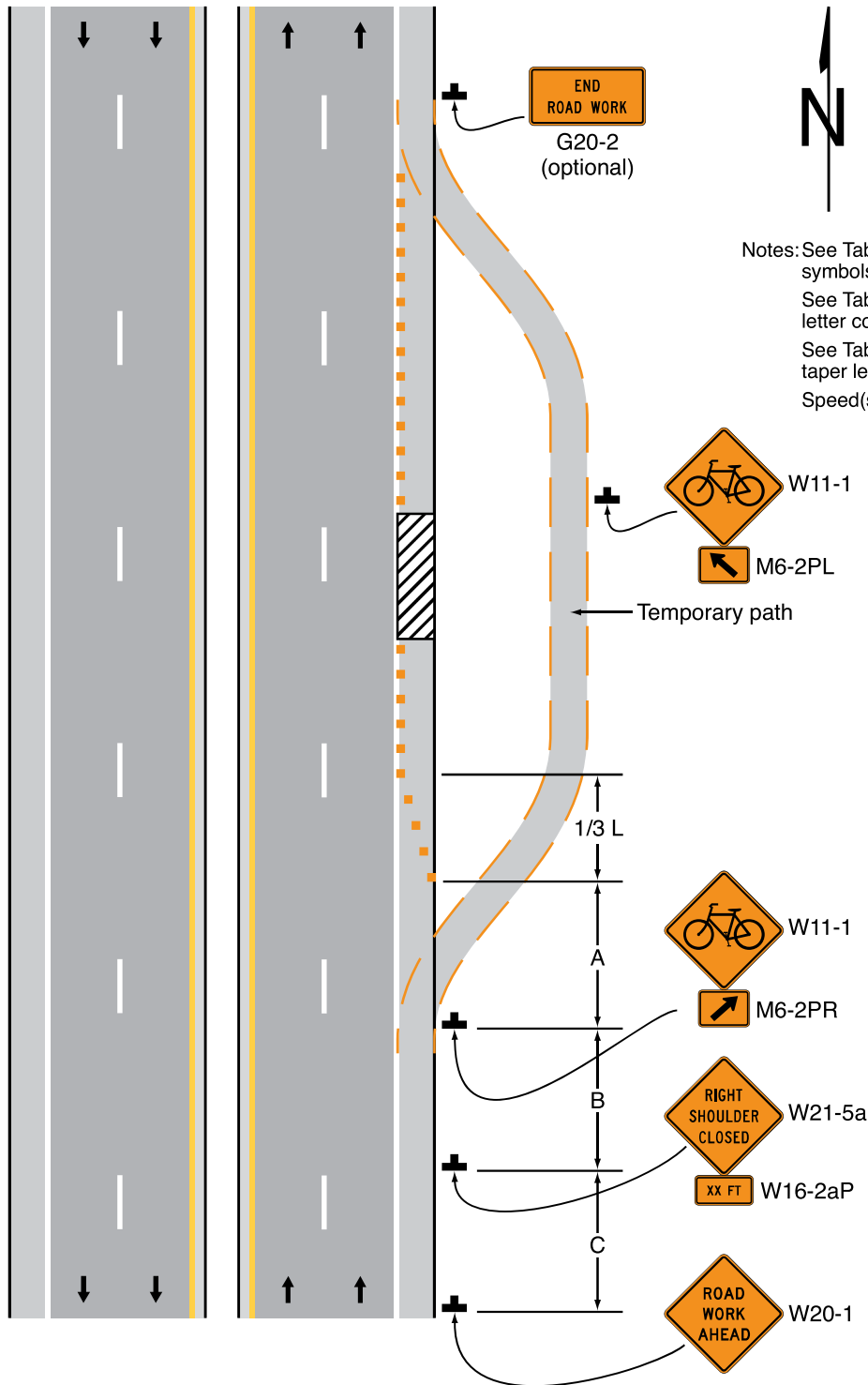
Option:

1. This plan may be used where a paved shoulder is closed and a temporary paved path is provided for bicyclists.

Guidance:

2. *This plan should be used where a paved shoulder is closed on a roadway having a speed limit greater than or equal to 45 mph that is part of a bikeway system (local, county or state) and a temporary paved path is provided for bicyclists.*
3. *The A, B, and C dimensions should be based on anticipated bicycle speeds.*

Figure 6P-51. Paved Shoulder Closure with a Bicycle Diversion onto a Temporary Path (TA-51)



Notes: See Table 6P-2 for the meanings of the symbols used in this figure.
See Table 6B-1 for the meanings of the letter codes used in this figure.
See Table 6B-4 for formulas for calculating taper length (L).
Speed(s) shall be motor vehicle speeds.

Based on specific site conditions and work durations, refer to Figure 6P-5 or 6P-34 for information regarding additional TTC devices and/or placement of barriers for motor vehicle traffic.

Typical Application 51